

SCOPE OF PRODUCT & SERVICE FABRICATION



CDAR Conveyor system



CDAR Conveyor system



FAT Inspection



CDAR Conveyor system



SCOPE OF PRODUCT & SERVICE INSPECTION



New production roller c/v system



Lifter system



SCOPE OF PRODUCT & SERVICES INSTALLATION



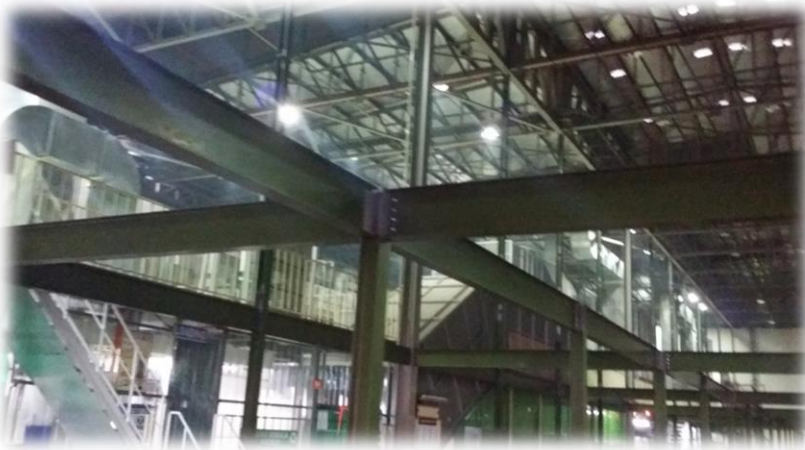
Lifter carrier system



SCOPE OF PRODUCT & SERVICES PLATFORM INSTALL



Upgrading & shift structure works



Factory Automation

SCOPE OF PRODUCT & SERVICES PLATFORM



Upgrading tyre nut runner structure



Factory Automation

SCOPE OF PRODUCT & SERVICES MACHINING WORK



Parts & design and fabrication

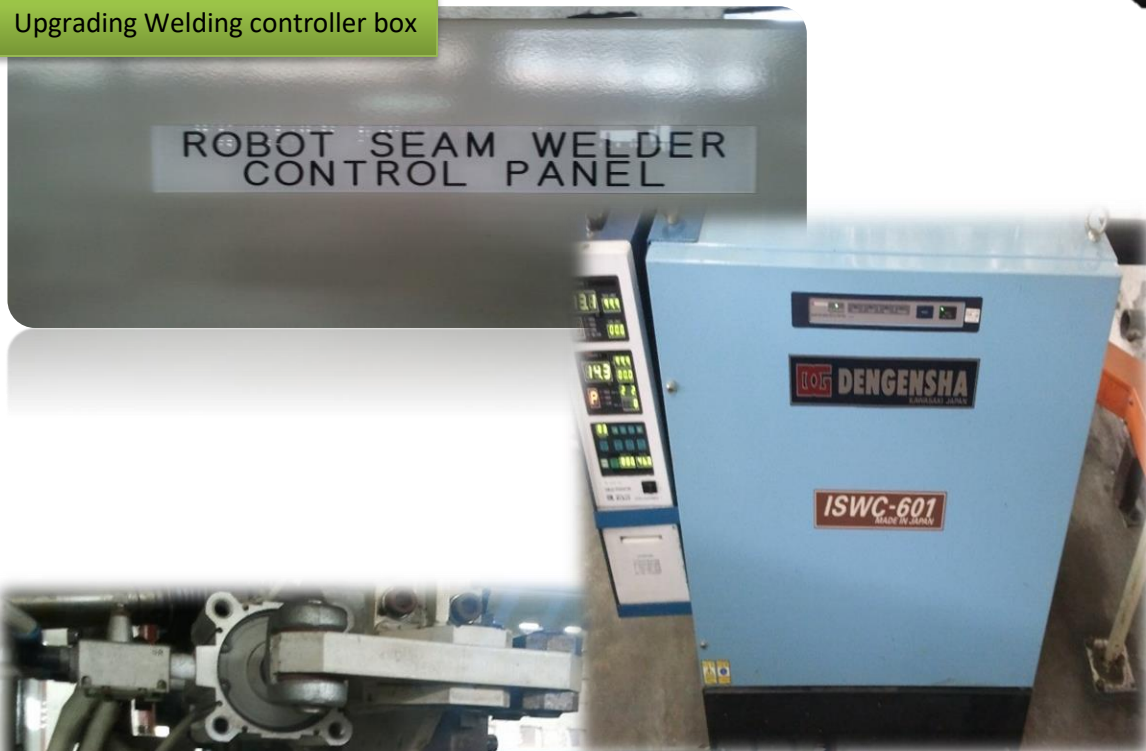
Factory Automation



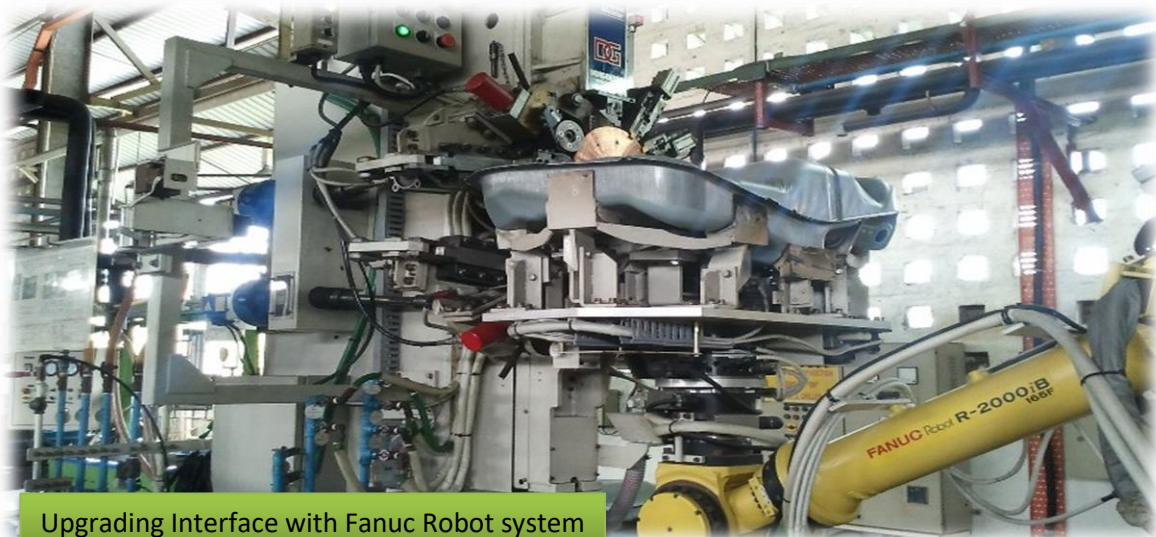
SCOPE OF PRODUCT & SERVICES WELDING MACHINE



Upgrading Welding controller box



Upgrading Tank welding system



Upgrading Interface with Fanuc Robot system

SCOPE OF PRODUCT & SERVICES HOME APPLIANCES



Factory Automation



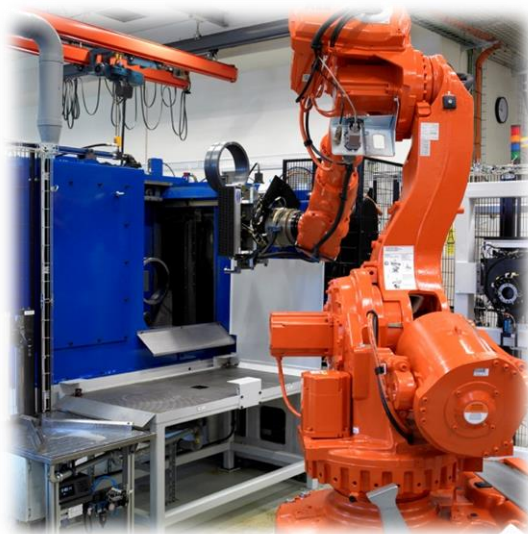
ASRS system upgrading



Panasonic Process relayout



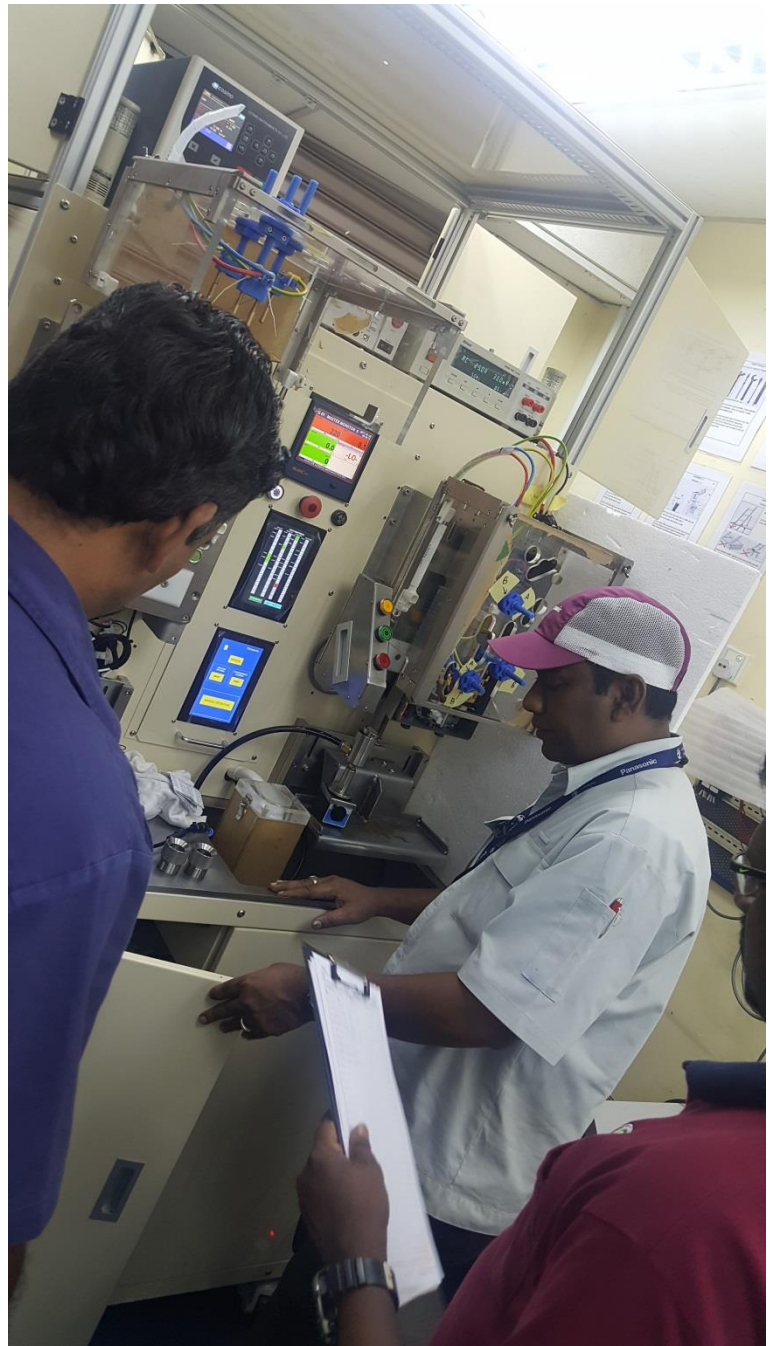
Process conveyor upgrading



SCOPE OF PRODUCT & SERVICES HOME APPLIANCES



Performance tester machine & HVS TESTER



SCOPE OF PRODUCT & SERVICES HOME APPLIANCES



Performance tester machine & HVS TESTER



SCOPE OF PRODUCT & SERVICE SUS DUCTING

Standard Steel Ducting installation works



PLC ,HMI & SCADA PRODUCT & SERVICES ELECTRICAL

- **PLC Series :**

- **Siemens :**

- S7 400
- S7 300
- S7 200
- S7 1200
- S5 Series

- **Allen Bradley:**

- SLC Series
- Control Logix j Series
- Micro Logix Series
- Schneider:
- Quantum
- Momuntum
- Primium
- M340
- Twido
- Zelio

- **GE Fanuc:**

- 70-30
- Versa Max

- **Unitronics**

- **PLC Series :**

- **ABB:**

- AC 500 Series

- **Mitsubishi:**

- Melsec Series
- A Series
- Q Series
- FX Series

- **Omron:**

- CP Series
- CQ Series

- **Other PLCs:**

- Keyence
- Sharp
- LG
- Koyo
- Panasonic
- Fuji
- Fatek
- Vigor
- Tinget
- Delta
- Toyopuc (PC3)

- **HMI:**

- Siemens
- Allen Bradley
- Schneider
- Omron
- Proface
- Tinget
- Unitronics
- Idec
- Touchwin

- **SCADA:**

- Vijeo Citect
- Citect
- Wonderware
- WinCC
- RS View
- Real Flex
- Cimplicity

- **RTU:**

- Datac
- Viola
- Schneider
- Promosis
- KingFisher

GENERAL MERCHANTS PRODUCT & SERVICES ELECTRICAL



General Works Solution

Motor Rewinding Solution

Motor Serving Solution

Mechanical Parts Fabrication



Mechanical Parts Supply

- >Hydraulic Fitting
- >Hydraulic Hose
- >Pneumatics Part
- >Ckd & Smc



Electrical Parts Supply

Electronic Parts Supply

- >Siemens
- >Timer
- >ABB
- >Allen Bradley
- >Omron

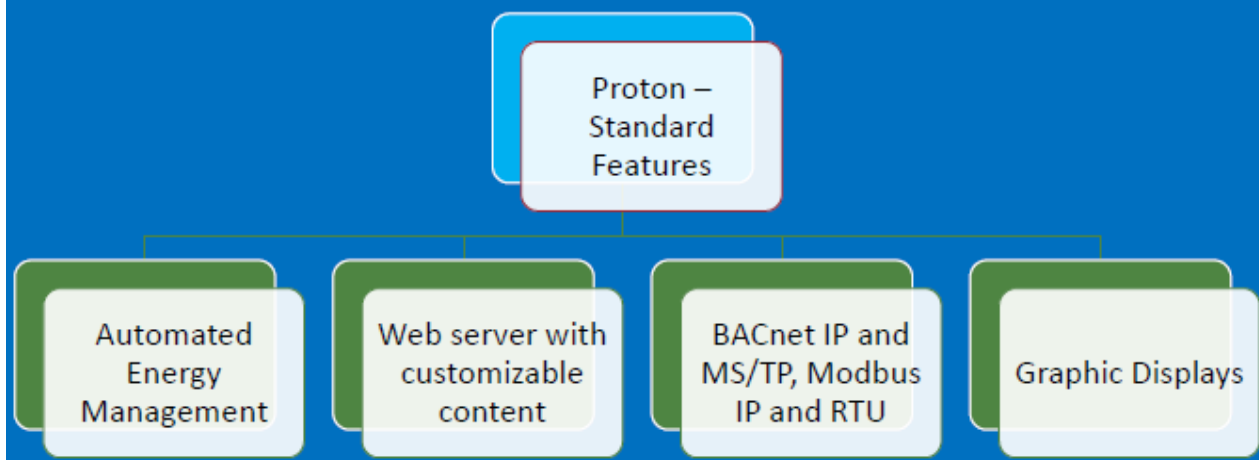




SCOPE OF PRODUCT & SERVICES BUILDING AUTOMATION

ENERGY MONITORING SYSTEM

Energy Monitoring Apps



• ELECTRICAL CONSUMPTION MONITORING



• WATER UTILITY MONITORING



• SOLAR ENERGY MONITORING

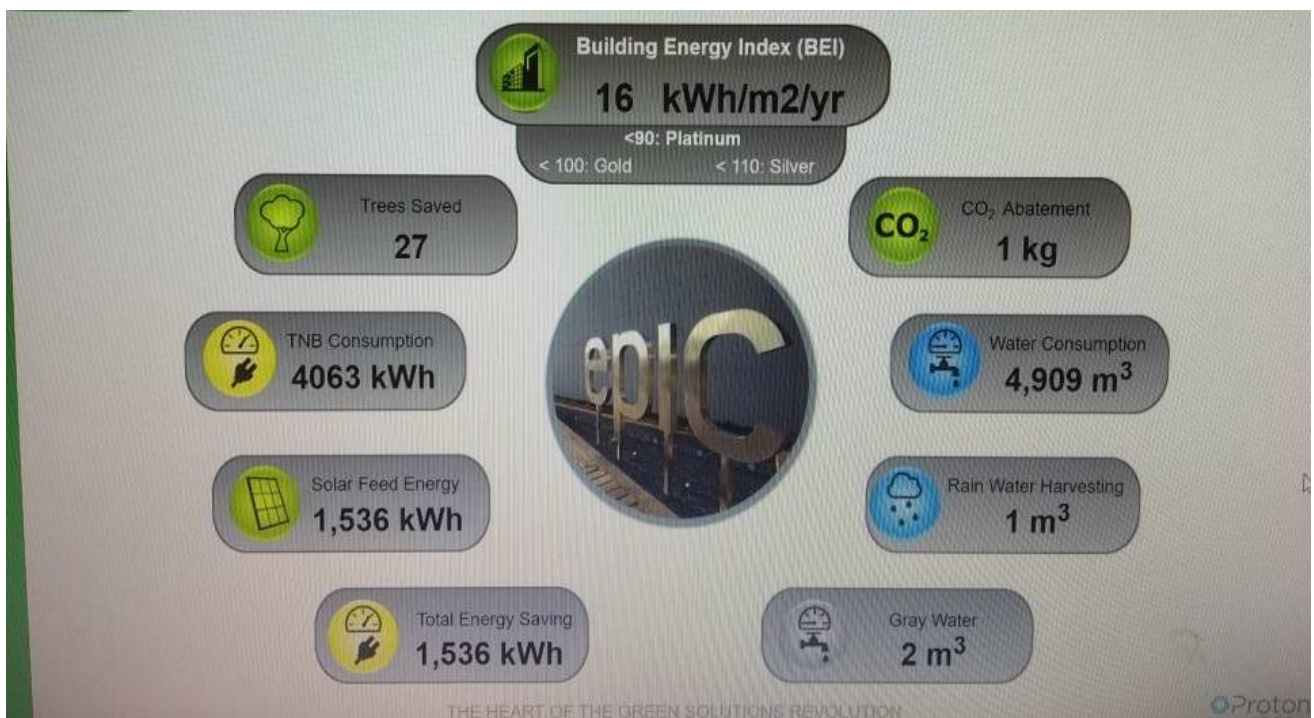
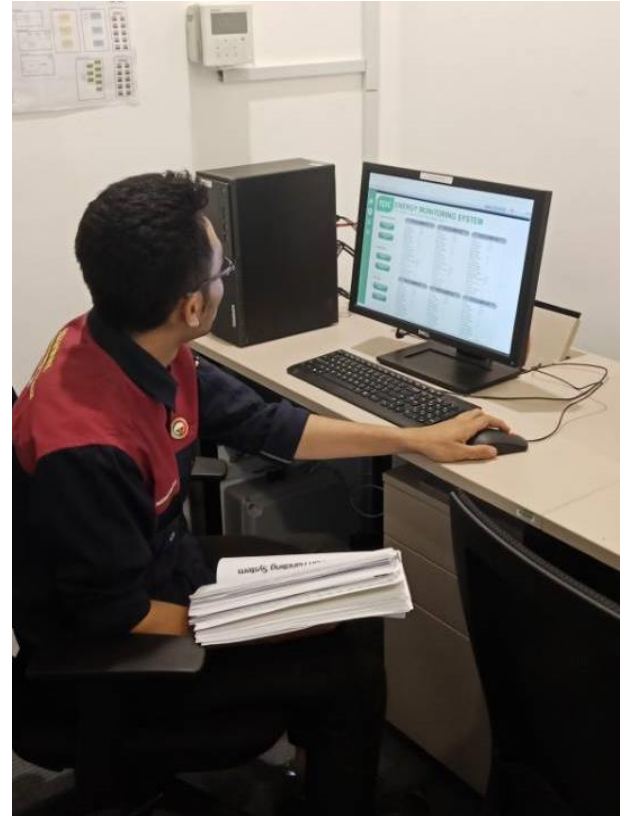


• AIR CONDITIONER MONITORING

SCOPE OF PRODUCT & SERVICES BUILDING AUTOMATION



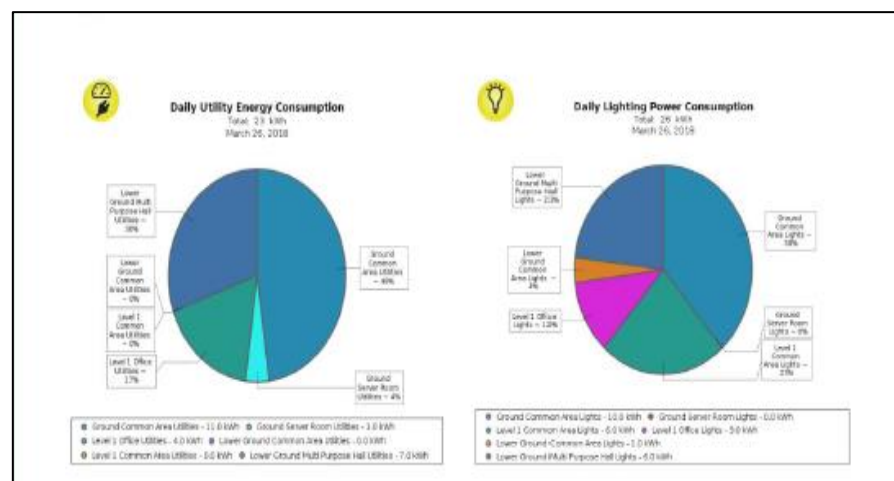
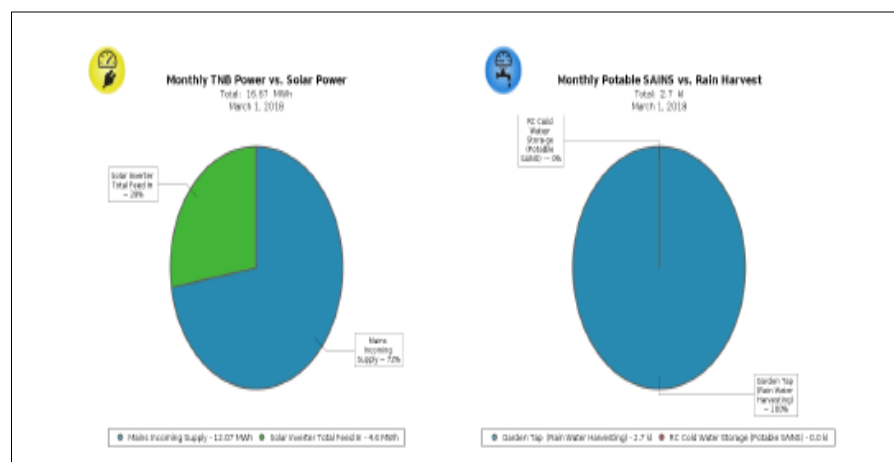
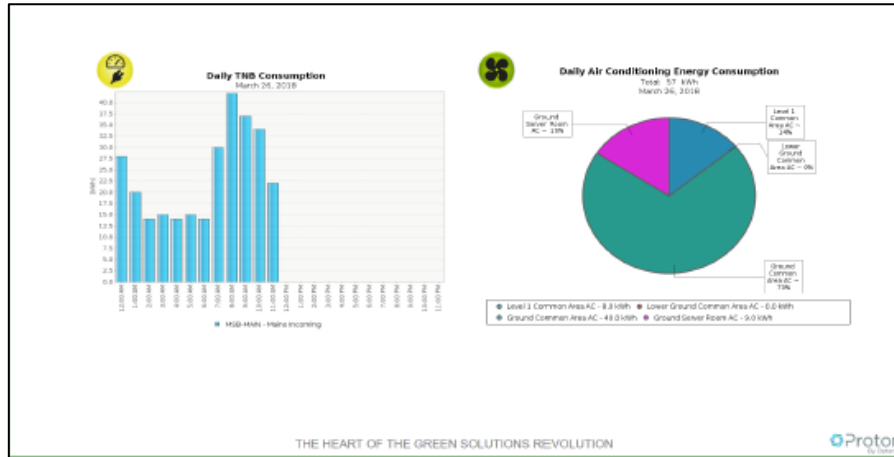
ENERGY MONITORING SYSTEM OUTPUT



SCOPE OF PRODUCT & SERVICES BUILDING AUTOMATION



ENERGY MONITORING SYSTEM REPORT GENERATE





SCOPE OF PRODUCT & SERVICES AUTOMATION

PRODUCTION MANAEGEMENT SYSTEM

Please follow the below steps to login to the PMS

1. Turn ON the Production Line/Block power.
2. Click "LOGIN"

PRODUCTION STATUS
DATE: 24/04/2018 TIME: 16:32 BLOCK: 3

PRODUCTION STATUS PLAN INPUT **2** LOGIN EXIT BLOCK 1 BLOCK 2

MODEL	DURATION TIME	QUANTITY (SET)			DIFFERENCE	ISSUE	DOWN TIME (MIN)			
		DAILY PLAN	TARGET	ACTUAL			DURATION TIME	QUALITY	FACILITY	PART DEL
DH-3JL3MH-MY		0	0	0	0	Log				
DH-3JL3MH-MY		0	0	0	0	Log				
DH-3JL3MH-MY		0	0	0	0	Log				
DH-3JL3MH-MY		0	0	0	0	Log				
DH-3JL3MH-MY		0	0	0	0	Log				
DH-3JL3MH-MY		0	0	0	0	Log				
TOTAL QUANTITY		0	0							
DIFFERENT QUANTITY		0								
BLOCK STATUS										
							00.00	00.00		

You will return to the main screen "Production Status".

13. Click "RUN" for the system start to count.

13.1 "PAUSE" for the system to pause count to move to another model and will back to the model.

13.2 "COMPLETE" to finish the production when Actual ≠ Daily Plan

14. Select the Block Status either in "AUTO" or "MANUAL" mode

15. Click "LOGIN"

16. Click "Log Off"

PRODUCTION STATUS
DATE: 24/04/2018 TIME: 16:32 BLOCK: 3

PRODUCTION STATUS PLAN INPUT **15** LOGIN EXIT BLOCK 1 BLOCK 2

MODEL	DURATION TIME	QUANTITY (SET)			DIFFERENCE	ISSUE	DOWN TIME (MIN)			
		DAILY PLAN	TARGET	ACTUAL			DURATION TIME	QUALITY	FACILITY	PART DEL
DH-4MS1VW-VN	1220 - 1405	200	0	0	0	Log				
DH-3JL3MH-MY		0	0	0	0	Log				
DH-3JL3MH-MY		0	0	0	0	Log				
DH-3JL3MH-MY		0	0	0	0	Log				
DH-3JL3MH-MY		0	0	0	0	Log				
DH-3JL3MH-MY		0	0	0	0	Log				
TOTAL QUANTITY		0	0							
DIFFERENT QUANTITY		0								
BLOCK STATUS										
							00.00	00.00		

13.2 **13.1** **13** **16** **14**

If there is down time happen:

1. Turn "ON" Selector Switch when down time start (Quality, Facility, Part Delivery or Other)
2. Turn "OFF" Selector Switch when down time end
3. Select the issue list
4. Click "Log"

PRODUCTION STATUS
DATE: 24/04/2018 TIME: 16:40 BLOCK: 3

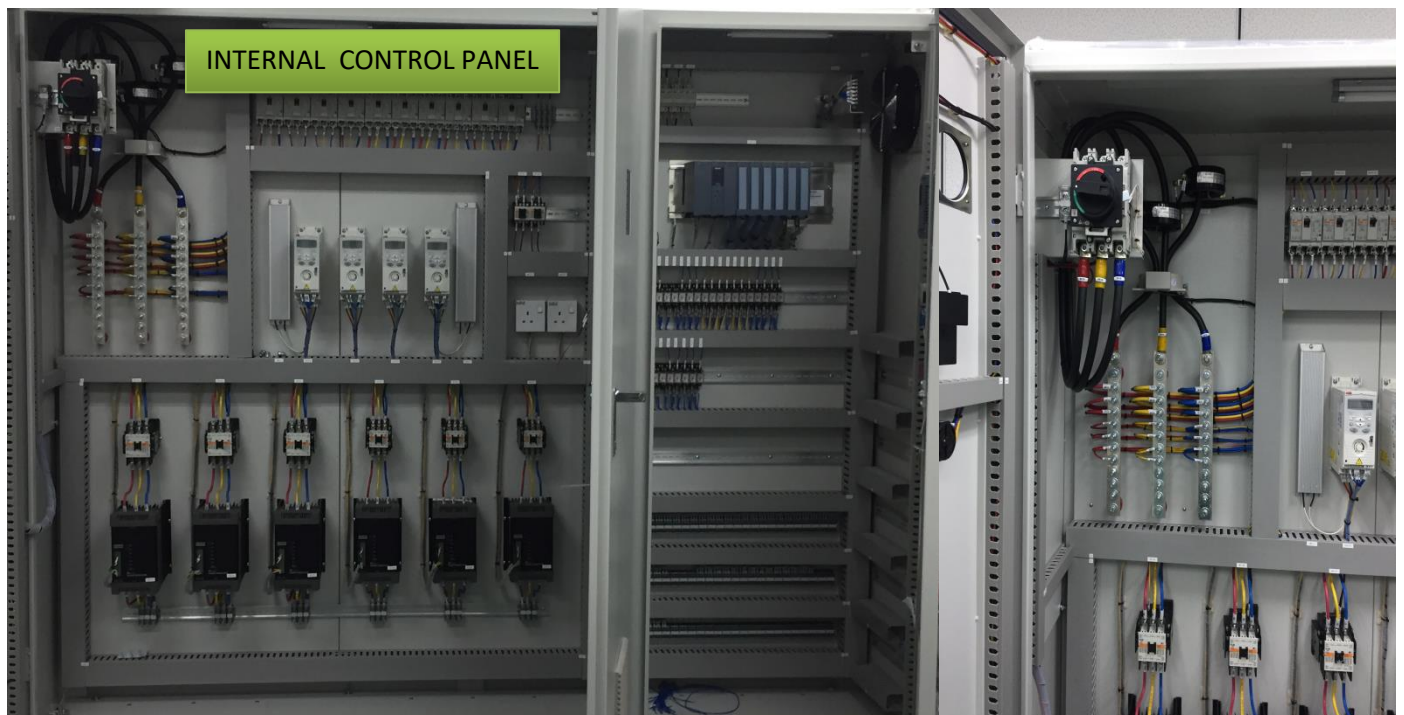
PRODUCTION STATUS PLAN INPUT **4** **3** LOGIN EXIT BLOCK 1 BLOCK 2

MODEL	DURATION TIME	QUANTITY (SET)			DIFFERENCE	ISSUE	DOWN TIME (MIN)			
		DAILY PLAN	TARGET	ACTUAL			DURATION TIME	QUALITY	FACILITY	PART DEL
DH-4MS1VW-VN	1220 - 1405	200	71	46	-15	Log	13:46 - 13:49			2.93
		0	0	0	0	Log	13:00 - 13:00			0.46
		0	0	0	0	Log				
		0	0	0	0	Log				
		0	0	0	0	Log				
		0	0	0	0	Log				
TOTAL QUANTITY		46								
DIFFERENT QUANTITY		-15								
BLOCK STATUS										
							66.39	97.21		

SCOPE OF PRODUCT & SERVICES LV CONTROL PANEL



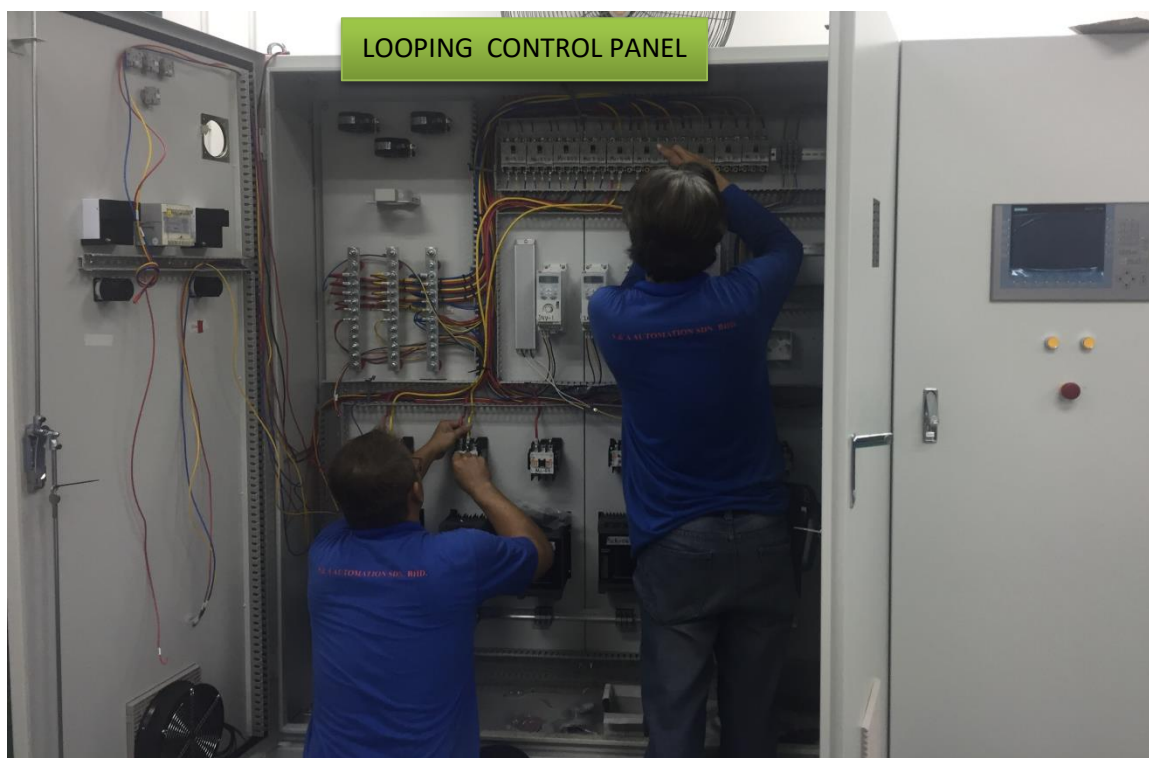
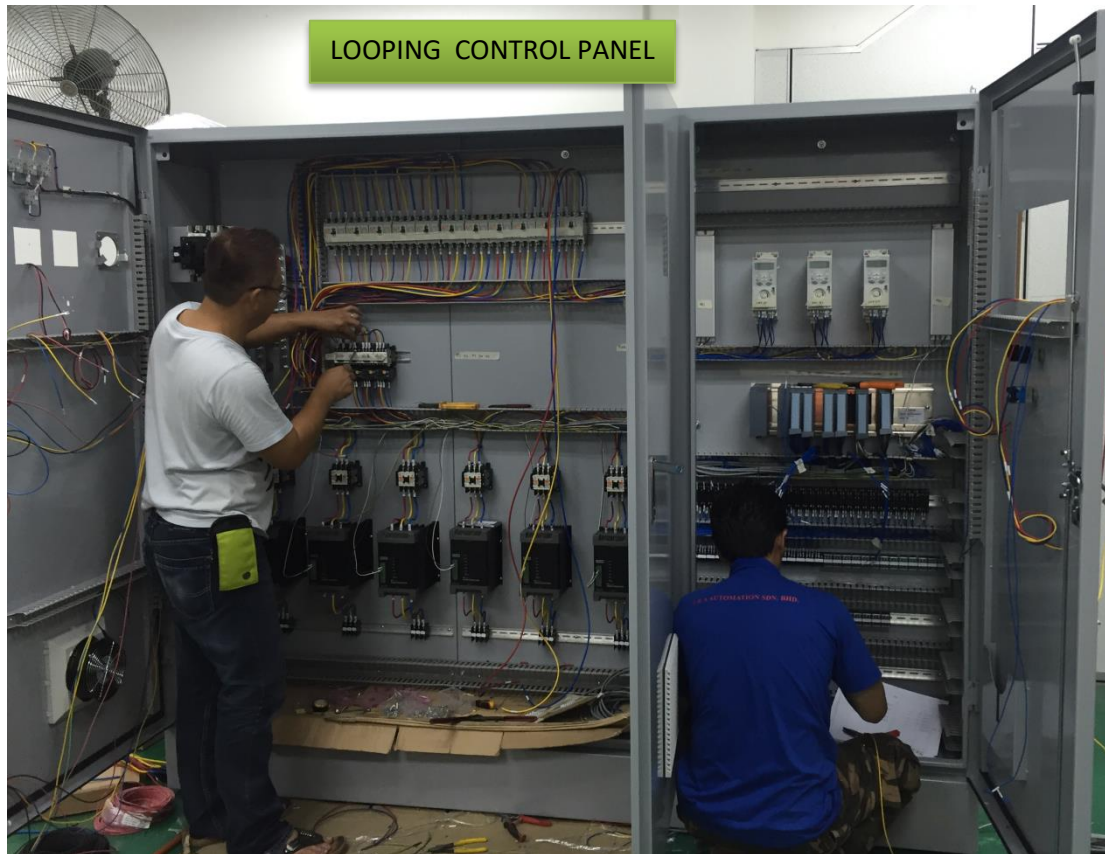
FABRICATION AND SUPPLY VARIES TYPE OF CONTROL PANEL



SCOPE OF PRODUCT & SERVICES LV CONTROL PANEL



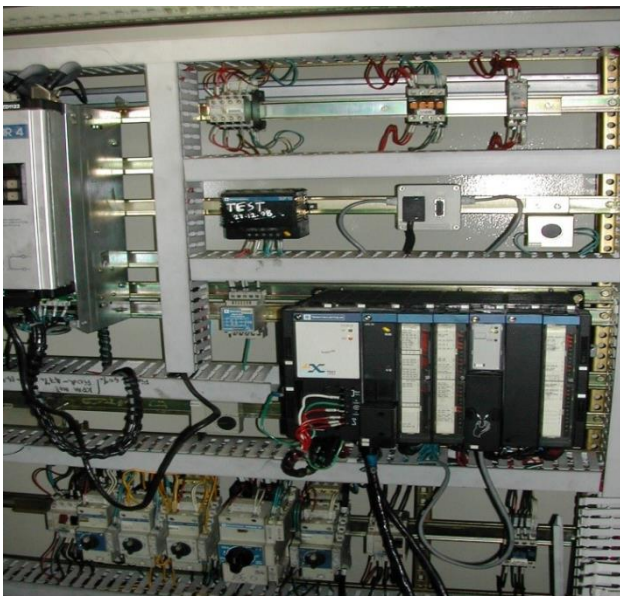
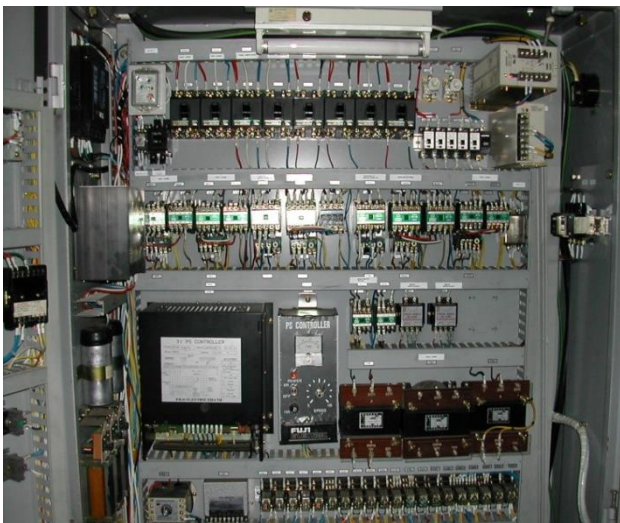
FABRICATION AND SUPPLY VARIES TYPE OF CONTROL PANEL



SCOPE OF PRODUCT & SERVICES LV CONTROL PANEL



FABRICATION AND SUPPLY VARIES TYPE OF CONTROL PANEL



SCOPE OF PRODUCT & SERVICES HV CONTROL PANEL



FABRICATION AND SUPPLY VARIES TYPE OF CONTROL PANEL



ED BY : TEAM DATE: 3/1/2018
IBRATION DUE DATE: 3/1/2020



SCOPE OF PRODUCT & SERVICES HV CONTROL PANEL



INSTALLATION AND TERMINATION WORKS OF CONTROL PANEL

